

微电机制动器

Micromotor Brake

产品特点

- 瑞迪微电机制动器是一种弹簧加压的干式摩擦电磁制动器，具有可靠的制动力和保持力，广泛应用于各种需要减速制动和保持制动的场合。
- 制动器额定电压 (VDC) : 12V、24V、45V、96V、103V、170V、180V、190V、205V
- 电网电压范围 (VAC) : 42~460V
- 制动器扭矩范围: 0.05~4N.m
- 可选配用于安装调速器的连接板
- 可选配简易整流器，安装于制动器端面或外圆面，结构紧凑，适用方便

应用范围

- 木工机械
- 制动电机
- 减速电机
- 包装机械
- 自动化技术
- 微型电机
- 航空高铁

Product Features

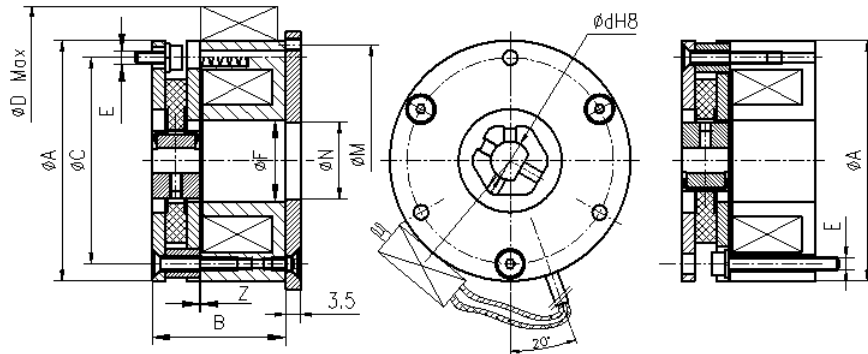
- REACH micromotor brake is spring-applied and dry-friction electromagnetic brakes. With reliable braking and holding forces, they are widely used in various of holding braking and deceleration braking occasions
- Rated voltage of Brake (VDC): 24V,45V,96V,103V,170, 180V,190V,205V
- Adaptable to various network Voltage(VAC):42~460V
- Large scope of the braking torque: 0.05~4N.m
- Optional governor connection plate
- Optional simplified rectifier installed on the end surface or outer circle of the brake, compact and easy to operate

Application

- Carpenter Machinery
- Braking Motor
- Decelerating Motor
- Packing Machinery
- Automation Technology
- Micromotor
- Aviation and high-speed rail

技术参数

基本组件+内置整流器



Technical Data

Small-sized Components+inner Rectifier

机座号	T	Tmax	d(标准)	C	E	A	B	D	F	Z
0501	0.12	0.24	6	32	2×M2.5	37	32	/	13.5	0.1
0502	0.25	0.5	7	40	2×M3	47	30	67	16	0.1
0503	0.5	1	6	48	3×M3	56	31.5	76	19	0.15
0504	1	2	8	58	3×M3①	65	31.8	85	24	0.2
0505	2	4	8	66	3×M4	75	34.4	95	28	0.2
1136	0.12	0.24	4	31	3×M3	36	22.4	/	7	0.1
1152	0.5	1	6	45	3×M3	52	32	66	17	0.15
1162	1	2	10	54	3×M4	62	31.4	84	21	0.2

单位为mm，T为额定扭矩（N.m）

安装结构尺寸可根据客户提供的特殊要求定制

ΦM及ΦN尺寸可根据客户需求提供，默认ΦM为Φ54，ΦN为Φ18

根据不同安装结构标记为①的安装螺钉可为3×M4

Unit:mm,T represents rated torque(N.m)

The installation sizes and dimensions could be ordered to satisfy customers' special requirements.

ΦM and ΦN can be provided according to customers' demands.The default values are Φ54 and Φ18.

The installation screws can be 3×M4 according to the installation structure①.

附件说明

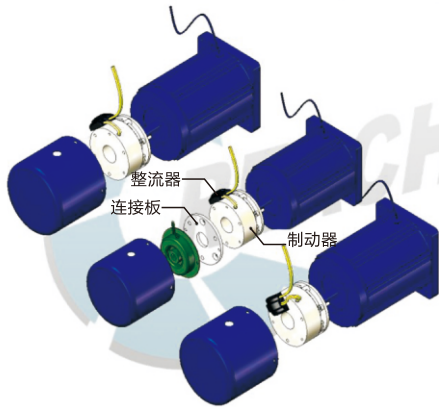
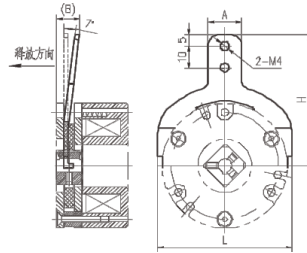
Accessories Instructions

手动释放手柄 Manual Release Handle

⊙ 释放手柄用于安装调试设备时靠人工手动释放制动器

⊙ The handle is released manually in installing and adjusting the equipments

机座号 Model No.	H	L	A	B
02	50	51	13	9
03	60	60	15	11
04	70	70	15	12
05	80	80	20	14



连接板 Connecting Board

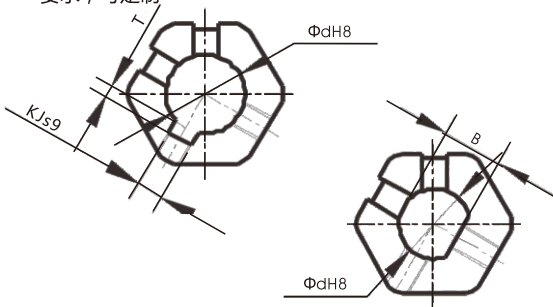
- ⊙ 便于客户在电机壳内部安装调速器等电机附件，连接板之安装尺寸可根据客户需求定制。
- ⊙ The part is used to help the customer to install the governor and other motor accessories. The installation sizes of the connection board can be ordered acc. To customers' demands.

整流器 Rectifier

- ⊙ 为便于客户设计结构紧凑的微型电机，可提供内置整流器安装于制动器端面及外圆面。
- ⊙ The part is convenient for the customer to design the compact-structure micro-motor. We are able to provide inner rectifier which can be installed upon the ending face and outer circular surface of the brakes.

方轮孔径 Aperture of Fly-wheel

- ⊙ 除特殊规定外，安装孔公差为H8
- ⊙ 除特殊规定外，键槽尺寸符合DIN6885/1(GB/T1095-79)JS9，带·号的孔径没有键槽
- ⊙ 可选择扁孔连接，B尺寸可定制
- ⊙ 表中为可选安装孔尺寸，其中加粗字体为标准尺寸有特殊要求，可定制



- ⊙ The tolerance of installation hole is H8, unless provided otherwise.
- ⊙ Unless provided otherwise, the dimension of keyway satisfies DIN688/1(GB/T1095-79) JS9 and, the aperture with symbol of · has no keyway.
- ⊙ The apertures presented in bold letter are basic dimensions.
- ⊙ Customer can select the flat hole for connection. The dimensions of B can be ordered.
- ⊙ The values in the list are optional dimensions for installation hole. The standard dimensions are presented in bold letters.
- ⊙ Customers are able to order for their requirements.

机座号	d
1*	6
2*	6/7
3	6/7/8/9
4	6/7/ 8/9/10/12
5	8/9/10/11/12/14/15